



United States
Department of
Agriculture

Jefferson County, Nebraska



Common Land Unit

| | |
|--|--------------|
| | Non-Cropland |
| | Cropland |

Tract Boundary
 PLSS

2022 NAIP Ortho Imagery

2024 Program Year
Map Created January 25, 2024

Farm **5102**
Tract **3053**

Wetland Determination Identifiers

- Restricted Use
- Limited Restrictions
- Exempt from Wetland Provisions

Tract Cropland Total: 9.60 acres

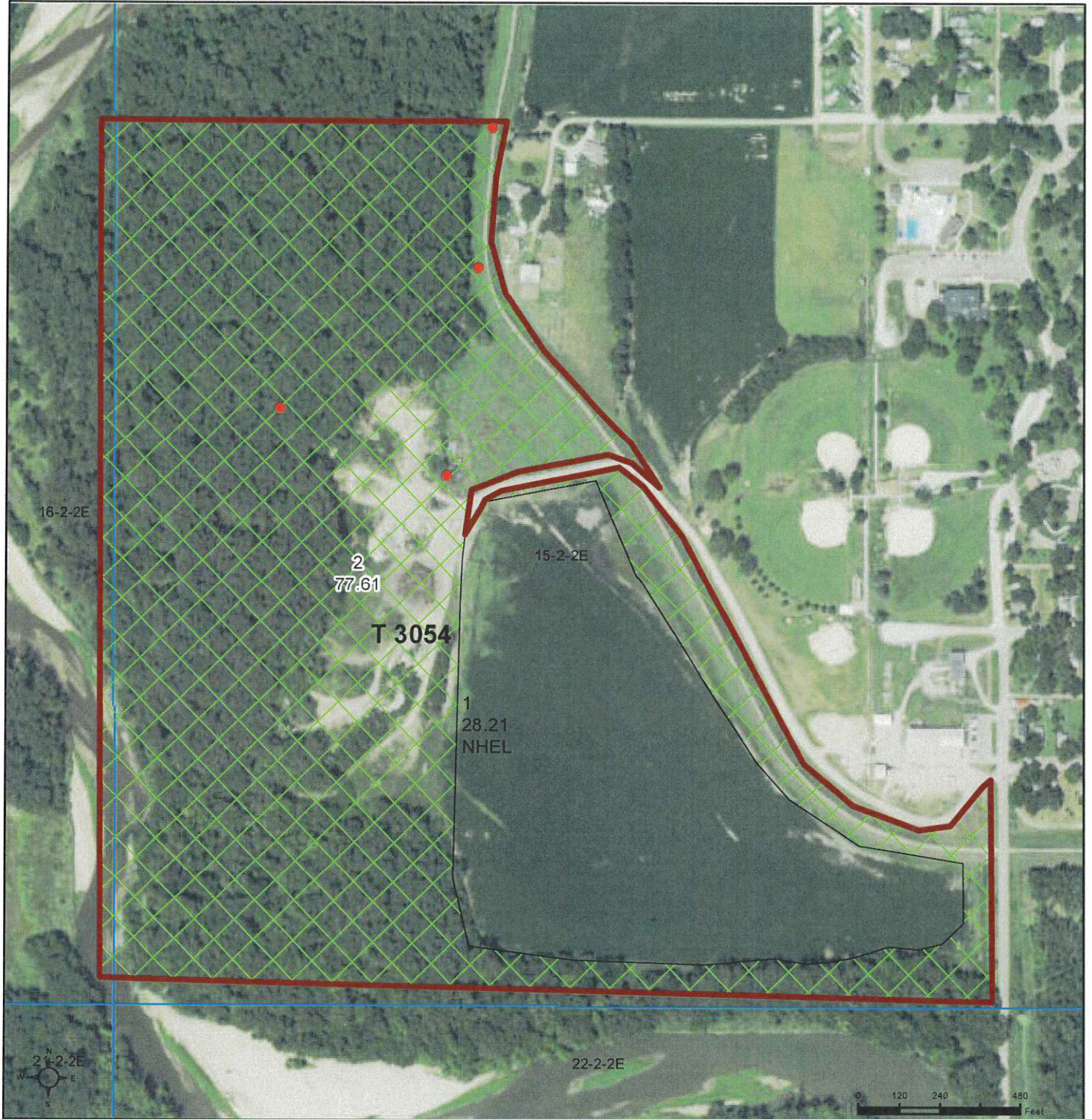
United States Department of Agriculture (USDA) Farm Service Agency (FSA) maps are for FSA Program administration only. This map does not represent a legal survey or reflect actual ownership; rather it depicts the information provided directly from the producer and/or National Agricultural Imagery Program (NAIP) imagery. The producer accepts the data 'as is' and assumes all risks associated with its use. USDA-FSA assumes no responsibility for actual or consequential damage incurred as a result of any user's reliance on this data outside FSA Programs. Wetland identifiers do not represent the size, shape, or specific determination of the area. Refer to your original determination (CPA-026 and attached maps) for exact boundaries and determinations or contact USDA Natural Resources Conservation Service (NRCS).

3rd st.



United States
Department of
Agriculture

Jefferson County, Nebraska



Common Land Unit

| | |
|--|----------------|
| | Non-Cropland |
| | Tract Boundary |
| | PLSS |
| | Cropland |

2022 NAIP Ortho Imagery

2024 Program Year
Map Created January 25, 2024

Farm **5102**
Tract **3054**

Wetland Determination Identifiers

- Restricted Use
- Limited Restrictions
- Exempt from Wetland Provisions

Tract Cropland Total: 28.21 acres

United States Department of Agriculture (USDA) Farm Service Agency (FSA) maps are for FSA Program administration only. This map does not represent a legal survey or reflect actual ownership; rather it depicts the information provided directly from the producer and/or National Agricultural Imagery Program (NAIP) imagery. The producer accepts the data 'as is' and assumes all risks associated with its use. USDA-FSA assumes no responsibility for actual or consequential damage incurred as a result of any user's reliance on this data outside FSA Programs. Wetland identifiers do not represent the size, shape, or specific determination of the area. Refer to your original determination (CPA-026 and attached maps) for exact boundaries and determinations or contact USDA Natural Resources Conservation Service (NRCS).

3rd street

Exhibit



Disclaimer: The public information contained herein is furnished as a public service by the City of Fairbury, NE. The data contained within this map is not to be used as a precise reference. It is not intended to be used to determine the location of utilities, data for the purpose of digging safety. For digging safety, please call the Digging Hotline of Nebraska at 1-800-551-5676.

Fairbury Nebraska Levee

Levee Mow/Hay - 18.42ac
Mow/Hay - 2.35

